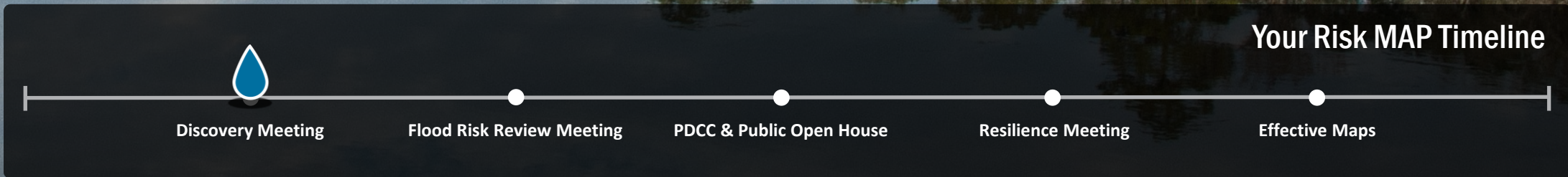
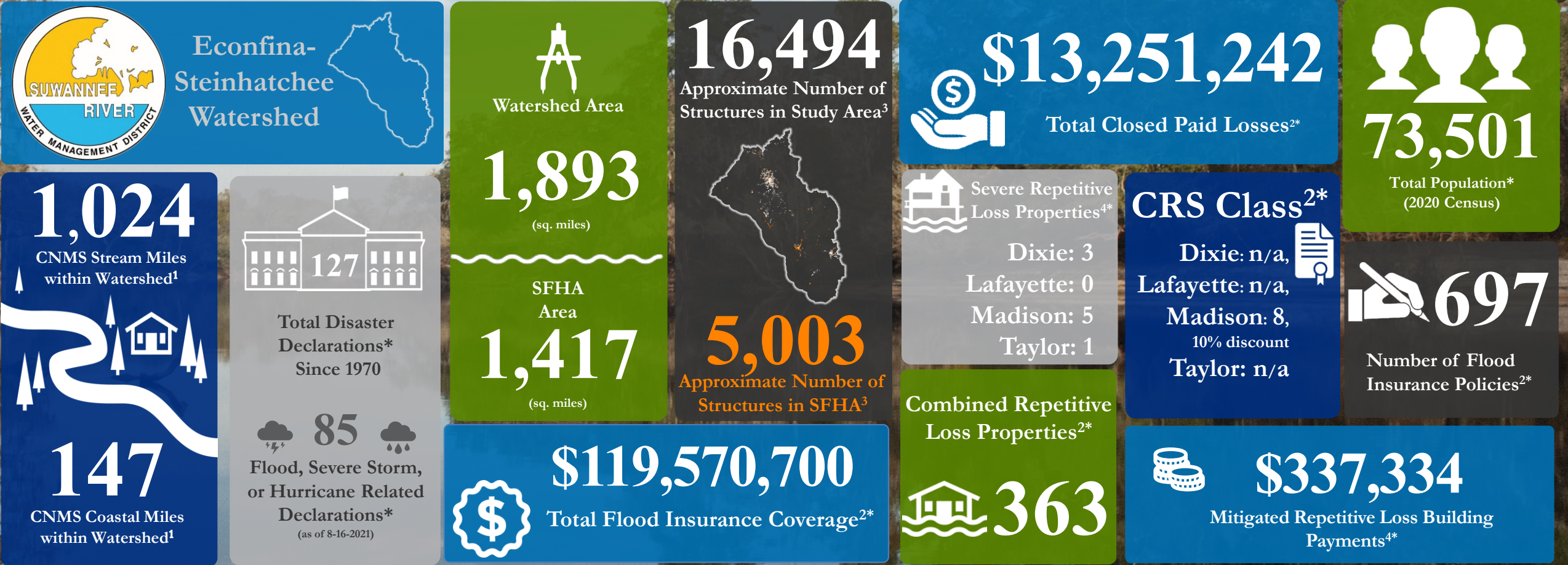


# Econfina-Steinhatchee Watershed Discovery Meeting

## Know Your Risk



<sup>1</sup> Region IV CNMS database dated 4-15-2022

<sup>2</sup> Community Information System (CIS), 3-2-2022. Countywide data includes areas outside of Econfina-Steinhatchee watershed. (CIDs: 120074, 120326, 120336, 120131, 120149, 120302, 120303)

<sup>3</sup> Microsoft-Bing building footprint data. Additional information on Microsoft-Bing building footprints available at <https://github.com/microsoft/USBuildingFootprints/blob/master/README.md>

<sup>4</sup> Florida State Hazard Mitigation Plan – 2018 Update, Appendix F

\* Countywide totals for Dixie, Lafayette, Madison, and Taylor Counties